

Opening handles

for latches

SPECIFICATION

Plastic (Polyamide PA)
black, matt **SW**

INFORMATION

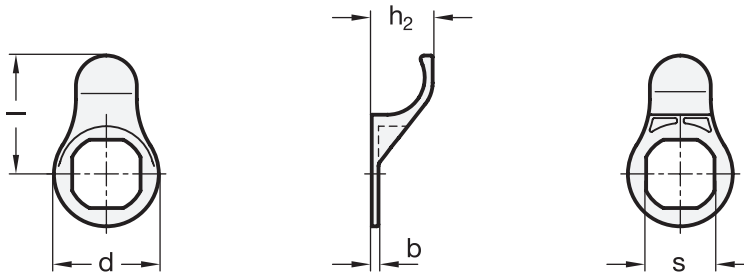
Opening handles GN 120.1 are simple operating elements which are used in combination with key or push-button actuated locking devices. They have a low installation height and can be mounted as required in a 90° grid pattern together with the lock housing. Please note: The clamping range A1 ... A9 and/or the latch distance A is reduced by the dimension „b“.

Opening handles GN 120.1 are suitable for the following latches and locking devices:

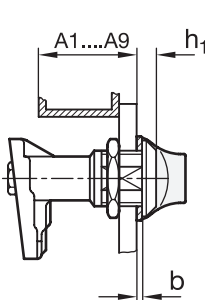
- Latches, lockable GN 115 (see page 1462)
- Latches, not lockable GN 115 (see page 1465)
- Hook-type latches GN 115.8 (see page 1474)
- Latches GN 119 (see page 1482)
- Snap locks GN 315.1 (see page 1539)
- Rotary clamping latches GN 516 (see page 1542)
- Rotary clamping latches GN 516.1 (see page 1544)
- Stainless Steel-Rotary clamping latches GN 516.5 (see page 1546)

TECHNICAL INFORMATION

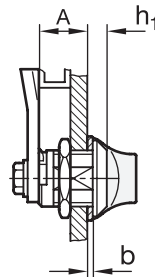
- Plastic characteristics (see page A2)



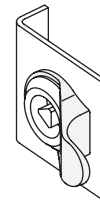
Examples of application



Latches GN 119



Latches GN 115



GN 120.1

Description	d	s	b	h1	h2	l	For latches	⚖
GN 120.1-31-SW	31	20.5	2	6	18	35	GN 115 / GN 115.8	3
GN 120.1-35-SW	35	20.5	2	8	18	36	GN 119 / GN 315.1 / GN 516 / GN 516.1 / GN 516.5	5

